

AASW Advanced Supervision Program

8-week virtual learning program



**CLAIM
20 HRS
CPD!**



Program dates: 9 July 2025 – 27 August 2025
Facilitated by Tamara Laing

- The program offers a combination of self-paced learning and facilitator-led sessions.
- There will be one virtual online session scheduled every week on Wednesday.
- All virtual online sessions will be recorded except the coaching circles.

Course description

AASW's Advanced Supervision Program is an 8-week evidence-based program with self-paced eLearning, online collaborative workshops, facilitator-led Masterclasses, and Coaching Circles.

The development of AASW's Advanced Supervision Program was a direct response to the recommendations outlined in the Coronial, Royal Commission, and State Ombudsman reports. These reports underscored the critical necessity for advanced supervision within the realm of frontline social work and the inadequacies in quality supervision training and support.

Participant Testimonies

"The course has prompted me to become more reflective in my daily practice and encourage the same for my colleagues."

"As a current supervisor, it was great to have some formalised training on what I have already been doing which will allow me to hopefully become a better supervisor as I impart the information and knowledge gained in this training."

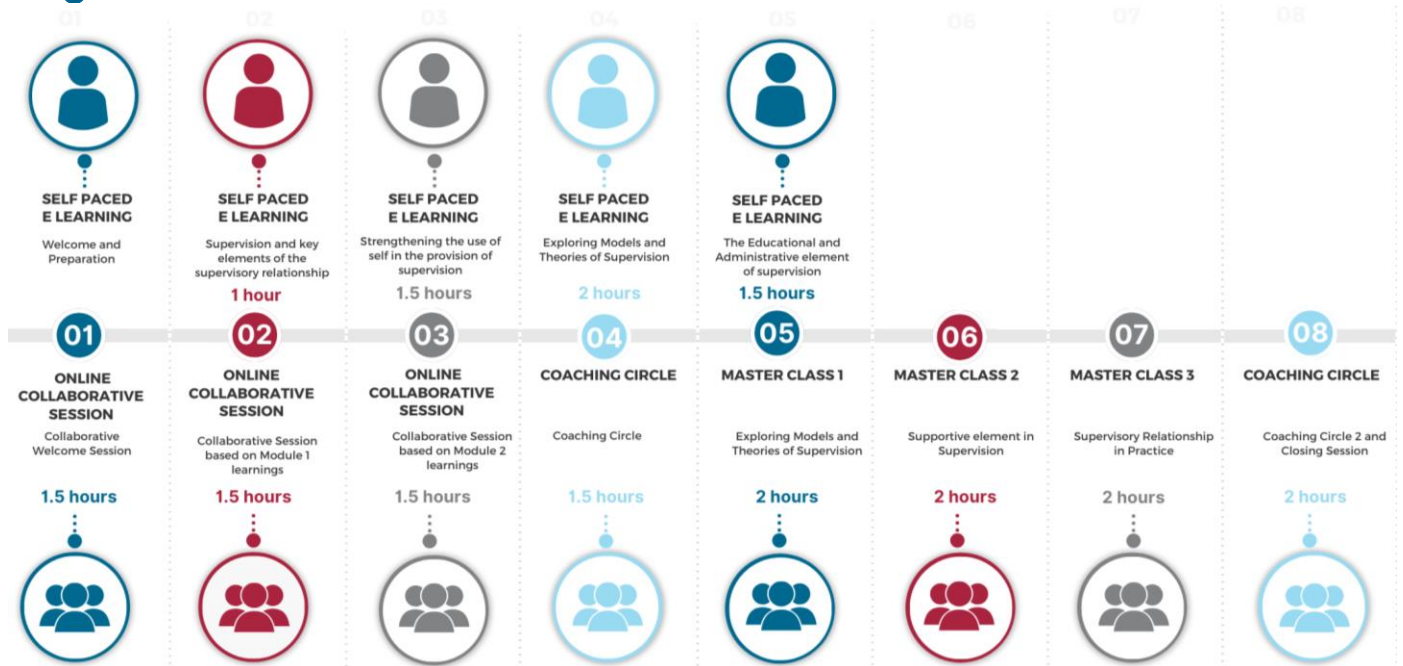
"The opportunity to join this training was so very valuable and getting to know so many peers from other departments helped validate so much of the work I was already undertaking."

KEY TAKEAWAYS

By the end of this program, participants will be able to:

- Articulate the different functions and purposes of social work supervision, as well as ethical dilemmas that can arise.
- Select supervision approaches to align with the needs of the supervisee and their goals for supervision.
- Establish and maintain a supervisory relationship that has the balance of safety and challenge conducive to supervisee growth.
- Support the ongoing accountability of supervisees through the practice of critical reflection.
- Identify their own areas of strength and development to inform their support needs as a supervisor.
- Formulate a supervision provision statement regarding the profession's supervision knowledge and skill base.

Program Overview



Program Schedule

Session Name	Format	Date	Time (NSW time)
Welcome Session	Live online	9 Jul 2025	10am -11:30am
Module 1 – Supervision Foundations	eLearning	1hr self-paced due 9 Jul	
Virtual Collaborative Session (Module 1)	Live online	16 Jul 2025	10am -11:30am
Module 2 - Developmental Stages of a Supervisor	eLearning	1.5hrs self-paced due 23 Jul	
Virtual Collaborative Session (Module 2)	Live online	23 Jul 2025	10am -11:30am
Module 3 – Models and Theories of Supervision	eLearning	2hrs self-paced due 30 Jul	
Coaching Session 1	Live online	30 Jul 2025	10am -11:30am
Masterclass 1: Exploring Models & Theories	Live online	6 Aug 2025	10am -12:00pm
Module 4 The Educative and Administrative Function of Supervision	eLearning	1.5hrs self-paced due 13 Aug	
Masterclass 2: Supportive Elements of Supervision	Live online	13 Aug 2025	10am -12:00pm
Masterclass 3: The Supervisory Relationship in Practice	Live online	20 Aug 2025	10am -12:00pm
Coaching Session 2 and Closing Session	Live online	27 Aug 2025	10am -12:00pm

How to Enrol:

[Click Here](#) to find out more.

OR

Scan the QR code to find out more.



Proudly funded by

