



LYRA TAYLOR
SOCIAL WORK
IMPACT SUMMIT

Supervision for tomorrow: innovation, impact, integrity

7 May 2026

The Playford Hotel, Adelaide

Delegate Handbook

ABOUT THE AASW

The Australian Association of Social Workers (AASW) is the professional body for social workers in Australia. As well as representing and supporting social workers in their essential work, we set the benchmarks for professional education and practice in social work.

VISION

Wellbeing and social justice in Australia

PURPOSE

Empowering social workers to make a difference

Contents

About the AASW	2
Welcome from the Chief Executive Officer	3
Acknowledgements	4
Sponsors and exhibitors	5
Program	6
Master of Ceremonies and Welcome to Country	8
Welcome address	9
Government and keynote speakers	10
Sessions and speakers	11
Continuing Professional Development (CPD) points and badges	16
Notes	18
Delegate survey	19

Join the conversation



#LyraTaylorSummit

Acknowledgement of Country

The Australian Association of Social Workers respectfully acknowledges the past and present traditional owners and ongoing custodians of the lands on which we live and operate. We pay our respects to their Elders past and present, their ancestors and their families.



Welcome from the Chief Executive Officer



Supervision is integral to ethical and effective social work practice, strengthening professional judgement, supporting reflection and practitioner wellbeing in an increasingly complex environment.

Recent research¹ highlights that strong supervision in social work is not incidental but built on specific knowledge and skills. It identifies areas such as adult learning, assessment, supervision methods and managing conflict as critical, while noting these are often not addressed in qualifying degrees. This reinforces the need for continued development and support for those in supervisory roles.

Over the summit, conversations will move from the foundations of safe, skilled and ethical supervision to the realities of practice, including organisational culture, moral injury, and the limits of supervision in increasingly demanding systems. Looking to the future, the focus of discussion will turn to what must be protected, what needs to change, and how a stronger, more consistent supervision culture can be built across Australia.

I see supervision as essential to both practitioners and the profession. It is a critical mechanism for maintaining practice quality, supporting sound ethical decision-making, and managing complexity.

Welcome to the summit. I look forward to the conversations ahead.

Kind regards

A handwritten signature in black ink, appearing to read 'Kerry Pennell'.

Kerryn Pennell
Chief Executive Officer
Australian Association of Social Workers

¹ Zuchowski, I & Pascoe, KM 2025, 'Professional development needs of social work field education supervisors in Australia', Australian Social Work, <https://www.tandfonline.com/doi/full/10.1080/0312407X.2025.2544850>

Acknowledgements

We gratefully acknowledge the contribution of our advisory group, speakers, and supporting partners who made this summit possible.

Advisory group



Carolyn Cousins

Director
Tuned In Consulting



Kate Fluin

General Manager
Community Youth Justice,
Department of Human
Services



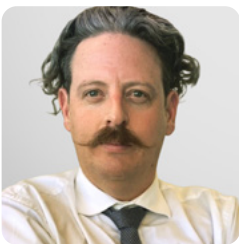
Dr Tracey Harris

CEO
Amovita International,
Mybio.Life,
TraceyHarris.Global



Mary Joyce

Head of Department Social Work
Sir Charles Gairdner Osborne
Park Health Care Group



Ben McGregor

Quality and Practice Partner
Anglicare Tasmania



Jemma Simmonds

Principal Social Worker
Student Support Services
(Department for Education)

Sponsors and supporters



Sponsors and exhibitors



Harvey Norman Technology for Business

Harvey Norman Technology for Business specialises in complete IT solutions designed to enhance cyber security, protect critical data, and maximise IT system efficiency for small businesses. We understand the challenges of staying ahead of evolving cyber threats and compliance regulations. With years of experience and a dedicated team, we provide advanced solutions to keep your IT systems secure, compliant with Australian regulations, and operating at optimum performance. As a trusted partner, we provide 24/7 monitoring, proactive management, expert support, and deliver big business IT services & cybersecurity at small business prices.



RREAL Supervision

The RREAL Supervision Model is a contemporary, evidence-based framework designed for today's complex, compliance-driven human service environments. Integrating individual, group and leader supervision, RREAL aligns practice across systems to enhance psychological safety, resilience and client outcomes, while meeting the AASW Practice Standards and SWRB principles. Grounded in critical reflexivity and social justice, it embeds Relationships, Resilience, Empowerment, Alignment and Learning (the RREAL DNA), moving beyond compliance to foster sustainable, high-quality social work practice.



Sally Watson Consultancy

Sally is an Accredited Mental Health Social Worker with over 40 years experience in a range of settings including hospitals, mental health and child protection. Her passion is working with families with young children, and has worked therapeutically in this space for over 20 years. She is trained in a number of attachment based interventions including Child Parent Psychotherapy.

Sally is a Marte Meo Licensed Supervisor. In this role she provides both training and supervision. Sally also provides reflective supervision to social workers and other professionals both in person and online



Hogan Care

Hogan Care was established because of lived experience with a family member. We provide NDIS-funded supported independent living (SIL), supporting people with disability to live independently in shared or individual homes.

Our core services:

- 24/7 support, personal care, and daily living assistance
- supports for people with high intensity needs and are registered for nursing care
- 15-day hospital-to-home discharge program
- social and community engagement
- flexible housing options based on individual needs
- tailored supported independent living (SIL) services and specialist disability accommodation (SDA).

Program

Time	Session	Speakers
8:30–8:45am	Welcome to Country	Luke Wilson, Cultural Educator, Kuma Kaaru Cultural Services
8:45–9:00am	Welcome address	Liz Little, AASW National President
9:00–9:10am	Opening address Honouring Lyra Taylor	Lauren Hawkins, Acting National Manager, Social Work Services, Services Australia
9:10–9:30am	Government representative presentation	Professor Sarah Wendt, Director, Social Workers Registration Board (SWRB) South Australia, Professor of Social Work
9:30–10:30am	Keynote presentation	Professor Kieran O’Donoghue, PhD: Head of the School of Social Work, Massey University NZ
10:30 – 11:00am	Morning tea break	
11:00am–12:05pm	Panel discussion Foundations for Safe, Skilled and Ethical Supervision	Karrina Betschart, Director of Professional Practice and Intake, Northern Territory Department of Education and Training Sasha Houthuysen, Director, Mulga Hill Projects Associate Professor Cate Hudson, Dean of the School of Social Work and Social Care, Adelaide University Dr Anita Morris, Partner, Solutions Together Ben McGregor, Quality and Practice Partner, Anglicare Tasmania
12:05–12:35pm	Presentation Supervision, Moral Injury and Organisational Culture: Expectations and Boundaries	Carolyn Cousins, Director, Tuned In Consulting
12:35–1:35pm	Lunch break	
1:35–2:40pm	Panel discussion Supervision in Context: Complexity, Diversity and Innovation	Kate Fluin, General Manager, Community Youth Justice, Department of Human Services Hailey Fuchs, Co-Founder, Suubi Consulting Toni Gwynn-Jones, President, Australian Clinical Supervision Association Mary Joyce, Head of Department, Social Work, Sir Charles Gairdner Osborne Park Health Care Group Anthony Lekkas, Relationship and Couple Counsellor, AMHSW

2:40–3:10pm	Presentation Culturally-Informed Supervision for the Aboriginal and Torres Strait Islander Workforce	Professor Tina Brodie, Pro Vice Chancellor: Indigenous Education, Adelaide University
3:10–3:40pm	Afternoon tea break	
3:40–4:10pm	Round-table conversation What to Protect and What to Strengthen in Supervision	Dr Tracey Harris, CEO, Amovita International, Mybio.Life TraceyHarris.Global
4:10–5:15pm	Panel discussion The Future: Building a National Supervision Culture	Kate Alexander, CEO, Barnardos Australia Elyse Leonard, Business & Practice Advisor, Amovita International Associate Professor Sarah Macdonald, Director of Social Work, Central Adelaide Local Health Network Jane Wexler, Founding Director, Wex Group Pty Ltd Wendy Joyce, Social Work Manager, Services Australia
5:15–5:30pm	Closing remarks	Dr Tracey Harris, CEO, Amovita International, Mybio.Life TraceyHarris.Global
5:30–6:30pm	Networking function	



Free Wi-Fi access

Delegates attending the 2026 Lyra Taylor Social Work Impact Summit can access complimentary Wi-Fi throughout the venue by using the following details:

Network name: Playford Wifi

Access code: Playford

If you experience any issues connecting to the Wi-Fi, please see a staff member for assistance.

Introductions

Master of Ceremonies



Dr Tracey Harris
CEO, Amovita International,
Mybio.Life TraceyHarris.Global

Tracey has been a leader in organisational and business design in both executive and leadership roles throughout her 30 year career. She has been a senior ministerial advisor to both state and federal ministers and members of Parliament and instrumental in developing and leading significant policy reform in both social and public policy arenas. Tracey comes from a family of business owners where her parents founded Alpha Electrics and Alpha Irrigation. In her role with Amovita International, she leads the Global Strategy and Executive Consulting Division and has a career that spans both Australia and internationally.

Tracey also provided lectureship at the Australian Catholic University where she lectured in the fields of public and social policy, leadership and organisational excellence. With an interest in research on high performance leadership and neurocare, Tracey has developed a high performance model for leadership, supervision and coaching and completed her doctorate with Griffith University in Brisbane researching leadership and supervisor capability. She is an international author on leadership excellence with Routledge.

Welcome to Country



Luke Wilson
Cultural Educator, Kuma Kaaru
Cultural Services

Luke Wilson is a Cultural Educator with Kuma Kaaru Cultural Services that has spent many years showcasing and sharing his culture locally, nationally and internationally. He is a Kurna Narungga, Ngarrindjeri, Arrente and Ngadjuri man.

Welcome address



Liz Little
AASW National President

Elizabeth (Liz) Little is a distinguished Tasmanian social work leader whose career has been defined by advocacy, reform and compassion. With more than four decades of experience spanning government, community, education and international collaboration, Liz has consistently worked to advance equality, human rights and the wellbeing of vulnerable communities.

After earning a Bachelor of Social Studies from the University of Sydney and a Master of Social Science (Administration) from the University of Tasmania, Liz began her career in community development and youth work before moving into leadership roles in social policy and justice reform. In 1990, she became the inaugural Director of Tasmania's Office of the Status of Women, where she played a central role in shaping government policy for women's equality. Five years later, she was appointed Tasmania's first Sex Discrimination Commissioner, implementing the new Sex Discrimination Act and strengthening protections for women's rights. During this time, she was recognised with a United Nations Day Certificate of Recognition for furthering the rights of women.

From 2001 to 2009, Liz served as Principal Consultant for Strategic Policy and Projects with the Department of Justice, where she was instrumental in developing Tasmania's landmark Safe at Home initiative, an integrated, whole-of-government response to family violence. Her expertise and leadership also saw her invited by the Chinese Government to deliver domestic violence training to senior officials and by Cambridge University to speak on gender equality at the House of Lords.

As Chief Executive Officer of the Sexual Assault Support Service (2010–2015), Liz championed trauma-informed practice, improved support for survivors of sexual assault, and contributed advice to the Royal Commission into Institutional Responses to Child Sexual Abuse. She later served as CEO of Rural Alive & Well (2016–2019), supporting rural communities through mental health, crisis and suicide prevention services.

Liz has also served in multiple national and advisory capacities, including as Chair of the National Association of Services Against Sexual Violence (2012–2015), AASW National Case Reviewer, Official Visitor to the Tasmanian Prison Service, and Ethics Committee Member for the University of Tasmania. In recognition of her enduring contribution to gender equality, justice and community wellbeing, Liz was inducted into the Tasmanian Honour Roll of Women in 2023. In November 2025, she was elected National President of the Australian Association of Social Workers (AASW). As National President Liz will continue to champion professional integrity, ethical practice, and the transformative power of social work to engage individuals, communities and systems in the pursuit of a more just and compassionate society.

Government and keynote speakers

Honouring Lyra Taylor



Lauren Hawkins
Acting National Manager, Social Work Services, Services Australia

Lauren Hawkins is the Acting National Manager of Social Work Services at Services Australia. Lauren provides leadership, strategic advice and professional expertise to support high-quality social work services and improve outcomes for people experiencing vulnerability.

Since joining Services Australia in 2004, Lauren has worked across frontline social work practice, program management, project delivery and leadership roles. She is committed to strengthening service quality and capability, supporting the social work workforce, and working across government to deliver practical, person-centred outcomes for individuals and communities across Australia.

Presentation abstract

This address honours Lyra Taylor's legacy and her enduring influence on social work and supervision. It connects her commitment to ethical leadership, reflective practice, and advocacy with the contemporary work of Services Australia, highlighting how values, human rights and social justice continue to shape practice and strengthen support for individuals and communities across Australia.

Government representative presentation



Professor Sarah Wendt
Director, Social Workers Registration Board (SWRB) of South Australia
Professor of Social Work at Melbourne University

Sarah is the inaugural Director for the South Australian Social Workers Registration Board. Sarah is also currently Professor of Social Work at Melbourne University and Chief Investigator for the Centre for Excellence for the Elimination of Violence Against Women (CEVAW). Prior to academia Sarah practiced in the field of domestic violence. She has taught in social work for over a decade and supervised many PhDs. She has published on violence against women and social work practice. Her research projects explore the impact of domestic violence on women's citizenship, service provision in the field of domestic violence, and engaging men to address domestic violence. More recently Sarah has published on social work registration and the future of the social work workforce.

Presentation abstract

Professor Sarah Wendt, Director of the Social Workers Registration Board (SWRB) of South Australia, will present on the role of supervision within a regulatory environment. The session will explain how effective supervision supports ethical decision-making, reflective practice, and professional growth, while also fostering collegial learning and shared accountability. Sarah will also explain the ways supervision contributes to public protection, strengthens professional standards, and supports social workers to navigate complexity and responsibility in contemporary practice settings.

Sessions and speakers

Keynote presentation



Professor Kieran O'Donoghue
Head of the School of Social Work, Massey University, Aotearoa New Zealand

Kieran O'Donoghue is Professor of Social Work at Massey University, Aotearoa New Zealand. He is a registered social worker, clinical supervisor, supervision educator, researcher and author. He coordinates the Postgraduate Diploma in Clinical Supervision at Massey University and has widely published on social work supervision. He is the lead Editor of the Routledge International Handbook of Social Work Supervision. Kieran has contributed to the education and training of social work supervisors in Aotearoa New Zealand, Singapore and Fiji.

In 2015, he was awarded the Aotearoa New Zealand Association of Social Workers Quality and Innovation Trophy for Excellence in Research and Certificate for Research Excellence for his contribution to social work supervision research in Aotearoa New Zealand.

Presentation abstract

Professor Kieran O'Donoghue will deliver a keynote exploring the evolution of social work supervision – honouring its foundations, examining current practice, and looking ahead to its future. The session will highlight supervision as both responsive and innovative, with a strong focus on practitioner wellbeing, professional development, and improved client outcomes, while maintaining its integrity through a sustained commitment to its moral foundation as an ethic of care.

Panel discussion

Foundations for Safe, Skilled and Ethical Supervision

Chaired by Dr Anita Morris, Partner, Solutions Together. This panel explores the core principles, responsibilities and supervisory capabilities that safeguard clients, strengthen practitioner wellbeing, and translate professional standards into everyday practice.



Karrina Betschart
Director of Professional Practice and Intake, Northern Territory Department of Education and Training

Karrina Betschart is an award-winning social work executive with over 25 years of experience spanning child protection, youth justice, education, and community services. Currently Director of Professional Practice and Intake for the Northern Territory Department of Education and Training, she leads strategic wellbeing and inclusion initiatives across Northern Territory Government schools. Known for her ethical leadership and trauma-informed practice, Karrina has shaped policy, built high-performing teams, and driven reforms in remote and urban settings. She is a recognised thought leader, NT Social Worker of the Year (2014), and an accredited member of the Australian Association of Social Workers.



Sasha Houthuysen
Director, Mulga Hill Projects

Sasha Houthuysen/Hill is a Yamatji woman living on Kurna Yerta and the Director of Mulga Hill Projects. She is a qualified Social Worker, Arts Therapist,

Sessions and speakers (continued)

Facilitator, multidisciplinary artist and mother who focuses on aligning cultural and clinical practices to ensure safe and supported connections.

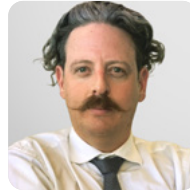
Sasha has worked across both Government and the Aboriginal Community Controlled sectors, within metro and remote settings, bringing experiences of front-line work and through executive leadership positions. Her work practices focus on improving systems and outcomes for Aboriginal and Torres Strait Islander children, families and the community through embedding wise cultural and clinical practices through inviting Aboriginal ways of knowing, doing and being.



Associate Professor Cate Hudson
Dean of the School of Social Work and Social Care, Adelaide University

Cate is Dean of School in the School of Social Work and Social Care at the new Adelaide University. Previously she served as the Dean of Programs with UniSA Justice & Society and prior to that, was the Regional Programs Coordinator for the Bachelor of Social Work and Bachelor of Social Sciences Programs offered through the Whyalla and Mt Gambier campuses of UniSA. Cate has coordinated and taught courses at the Bachelor and Master level for students located at Magill, Mt Gambier, Whyalla or anywhere around Australia. She has a strong interest in fitness to practice and professional development, both of which are essential to ensuring the quality-of-service provision to clients and the community.

Cate's research interests encompass professional development for rural, regional, and remote staff and the scholarship of teaching and learning. Cate has used that knowledge and experience to assist professionals in regional areas of South Australia to access professional development opportunities.



Ben McGregor
Quality and Practice Partner, Anglicare Tasmania

Ben is the Quality and Practice Partner at Anglicare Tasmania. With nearly two decades of experience in mental health and community services, Ben brings a blend of leadership and strategic insight, overseeing service delivery and guiding key initiatives. His expertise in practice oversight, supervision, and corporate governance, along with a personal commitment to mental health, drives his passion for enhancing performance, optimising resources, and building strong stakeholder relationships to achieve impactful outcomes.

Presentation

Supervision, Moral Injury and Organisational Culture: Expectations and Boundaries

As expectations of supervision expand to address practitioner wellbeing, moral injury, and organisational culture, this session examines the limits and responsibilities of the supervision relationship. It explores boundaries across different supervision models and introduces the concept of the "third contract" between supervisors and organisational leadership.



Carolyn Cousins
Director, Tuned In Consulting

Carolyn Cousins is a social worker and adult educator with extensive experience in the trauma and mental health sectors in both Australia and the UK. She holds Bachelor's and Master's degrees in Social Work, a Master's degree in Education (Adult),

and a Master's degree in Applied Neuroscience. As an AASW Accredited Supervisor, Carolyn has supported the AASW as a subject matter expert and facilitator. Carolyn has published articles and book chapters on supervision and offers supervision to professionals across various fields.

Panel discussion

Supervision in Context: Complexity, Diversity and Innovation

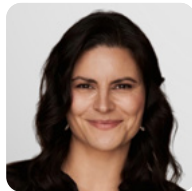
Chaired by Mary Joyce, Head of Department, Social Work, Sir Charles Gairdner Osborne Park Health Care Group. This panel examines culturally responsive and innovative approaches that honour diversity while upholding professional standards, accountability and ethical integrity.



Kate Fluin

General Manager, Community Youth Justice, Department of Human Services

With over 27 years of experience in child protection and youth justice, Kate has built an extensive career dedicated to improving outcomes for vulnerable children and young people. Beginning as a social worker with the Department for Child Protection, Kate has held a range of leadership roles, including Manager and Practice Leader, across rural, remote, and metropolitan regions. In 2024, she transitioned to the Department of Human Services, where she now serves as General Manager, Community Youth Justice. In this role, she oversees the operational management and clinical governance of youth justice services, including courts, bail, home detention, and case management programs. Holding a Bachelor and Master of Social Work, along with postgraduate studies in child development, trauma, and leadership, Kate is deeply committed to driving best practice, strengthening service partnerships, and ensuring the highest standards of care and support for young people in the justice system.



Hailey Fuchs

Co-Founder, Suubi Consulting

Hailey Fuchs is an experienced social worker and cultural practice leader with over 15 years working across complex child protection, multicultural, refugee and migrant services. With eight years in statutory child protection in South Australia and senior leadership roles in the settlement sector, Hailey has supervised multidisciplinary and CALD-identifying teams across high-risk, crisis, and settlement contexts.

Her practice is grounded in cultural humility, identity affirming supervision, and strengthening organisational capability to work safely and effectively with diverse communities.

Hailey specialises in culturally responsive and trauma informed supervision, supporting practitioners to navigate risk, uncertainty and cross-cultural complexity while maintaining ethical, reflective and accountable practice.

As Co-Founder of Suubi Consulting, she partners with organisations to build cultural capability, embed inclusive supervision frameworks, and drive systemic change that honours the lived experience and cultural identity of both workers and the communities they serve.



Toni Gwynn-Jones

President, Australian Clinical Supervision Association

Toni Gwynn-Jones is a highly experienced clinician, educator and clinical supervisor with over 40 years of practice across nursing, midwifery and health leadership. She holds a Master of Nursing, Graduate Diplomas in Midwifery and Professional Development Education, and formal qualifications in training, assessment and project management. Throughout her career, Toni has worked in senior

Sessions and speakers (continued)

roles in clinical governance, quality and safety, workforce development and professional education within ACT Health and Calvary Public Hospital Bruce

Toni is deeply committed to reflective practice and the role of clinical supervision in supporting ethical, effective and sustainable professional practice. Since 2023 she has provided mentoring, coaching and clinical supervision through private practice to health and human service professionals. She is currently President of the Australia Clinical Supervision Association and brings a practical, cross-disciplinary perspective on strengthening supervision practice across the helping professions.



Anthony Lekkas
Relationship and Couple
Counsellor, AMHSW

Anthony Lekkas (he/him) is a family violence consultant, trainer, relationship counsellor and accredited mental health social worker working in the LGBTIQ+ and mainstream community health services and in private practice. Anthony's work in the criminal justice system included working with incarcerated young people, as well as leading an LGBTIQ+ family violence court support team with Magistrates Courts Victoria. His clinical work experience involves working with victim survivors and perpetrators in 'hetero' and queer men's behaviour change programs. Anthony provides clinical supervision to family violence practitioners and teams. In private practice he provides relationship counselling to LGBTIQ+ and straight people in monogamous, non-monogamous and polyamorous relationships.

Presentation

Culturally-Informed Supervision for the Aboriginal and Torres Strait Islander Workforce

This session explores culturally informed supervision grounded in Aboriginal and Torres Strait Islander ways of knowing, being, and doing. It highlights how relational, culturally safe supervision strengthens practitioner wellbeing, supports cultural identity in the workplace, and contributes to more responsive services and improved outcomes for communities



Professor Tina Brodie
Pro Vice Chancellor: Indigenous
Education, Adelaide University

Professor Tina Brodie (BSW (Hons) GradCertCouns, PhD) is an Aboriginal woman with connections to Yawarrawarrka and Yandruwandha (South Australia).

Tina is currently the Pro Vice Chancellor: Indigenous Education at Adelaide University and has over 18 years of experience in Aboriginal health and wellbeing in research, education, clinical, project and leadership roles.

Round-table conversation

What to Protect and What to Strengthen in Supervision

Dr Tracey Harris, CEO, Amovita International, Mybio.Life, TraceyHarris.Global

Led by Dr Tracey Harris, this interactive session invites participants to share perspectives, reflect together and contribute ideas from across the room. Participants will consider what must be protected about supervision as the sector evolves, and what effective supervision should look like nationally in the next decade.

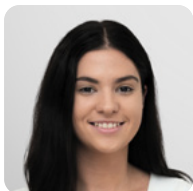


Dr Tracey Harris
CEO, Amovita International,
Mybio.Life, TraceyHarris.Global

Panel discussion

The Future: Building a National Supervision Culture

Chaired by Kate Alexander, CEO, Barnardos Australia. This forward-focused panel explores the leadership, governance and collective action required to build a strong and consistent national supervision culture across Australia.



Elyse Leonard
Business & Practice Advisor,
Amovita International

Elyse's career spans Queensland, Western Australia, New South Wales, Tasmania and Adelaide and she holds degrees in both psychology and social work. Elyse has worked in both clinical and professional roles across the non-government, government,

and corporate sectors, specialising in complex and vicarious trauma, clinical mental health and organisational excellence. She uses a range of clinical and professional approaches including neuro-social science, trauma-informed and transactional analysis approaches to support clients to enhance wellness and high performance in the workplace.

Elyse develops and facilitates training in neuro-wellness, trauma, professional and organisational excellence. She has worked across the aged care, mental health and disability sectors.

She presents at local and national conferences on mental health and her research interest is in professional excellence and wellness in the workplace. Elyse also volunteers to support people experiencing homelessness in Brisbane.



**Associate Professor
Sarah Macdonald**
Director of Social Work, Central
Adelaide Local Health Network

Sarah lives and works on Kurna land. She is currently the Director of Social Work at Central Adelaide Local Health Network and a Clinical Associate Professor with Adelaide University. Sarah completed her Bachelor of Social Work at the South Australian Institute of Technology and was active in student politics at the time HECS was introduced in Australia. Her post graduate qualifications are in public policy and management, and she is a Prosci Certified Change Practitioner.

For the last two decades her macro social work practice has been in public sector leadership in the areas of clinical service design and implementation, large scale change management, clinical governance, and fostering culturally responsive organisational culture in complex service delivery systems. She is passionate about supporting and developing the next generation of public sector social work leaders and is highly regarded for her mentoring of emerging clinical leaders.

Sessions and speakers (continued)



Jane Wexler
Founding Director, Wex Group
Pty Ltd

Jane is widely regarded for her wealth of experience, expertise and engaging style, delivering leadership development, supervision, coaching, mediation and education to emerging and experienced leaders in Australia, China, Singapore and Asia Pacific. She is Founding Director of Wex Group Pty Ltd.

As an academic, Jane taught social work at Deakin, RMIT & Monash universities, and business studies at Holmes Change le College, Shanghai. Concurrently, she co-published and co-owned a successful Australian entertainment magazine, blending her love of the arts with leadership acumen. Jane combines her unique skills across sectors with an interest in Eastern philosophy. She is committed to self-mastery, authentic relationships and creatively using frameworks to foster positive supervision and organisational cultures.



Wendy Joyce
Social Work Manager, Services
Australia

Wendy is a Social Work Manager in Services Australia responsible for a social work team across South Australia, Victoria and Tasmania. Wendy provides leadership and professional expertise to social workers providing high quality services to customers experiencing vulnerability.

Wendy joined Services Australia in 2011 and has worked developing and supporting operational teams in the delivery of social work services across the Northern Territory, remote Australia, South Australia, Victoria, and Tasmania. Prior to this she worked across Commonwealth and various State governments in service delivery areas including child protection, infant and maternal health, and in policy development. She is committed to the delivery of high quality social work services to vulnerable Australians.

CPD points and digital badges

Raise your professional profile with an exclusive AASW Lyra Taylor Social Work Impact Summit digital badge.

All attendees and presenters at the summit will earn an AASW digital badge, providing an effective way to showcase your expertise and accomplishments online.

Each badge is certified by the AASW and includes detailed metadata outlining your professional qualifications, as well as the education, training and experience required to earn it.

The summit can be claimed as up to 6.5 hours for CPD purposes under *Category 3: Professional Identity*, consistent with the CPD Requirements outlined in the AASW CPD Policy. Members of the AASW will have their CPD Record updated automatically upon completion of this activity.





Supervision training

The AASW Education and Training team are award-winning learning and development specialists.

We offer live-online CPD webinars, virtual workshops and learning programs tailored to meet your professional development needs.

Introduction to Best Practice for Supervision

Workshop is designed for social workers who are stepping into supervision roles or seeking to strengthen their foundational skills. This two half-day live online virtual program introduces participants to contemporary supervision models, principles, and ethical considerations that underpin effective supervision practice.

**Claim
7.5 hrs
CPD**

Advanced Supervision Program

An eight-week, evidence-based live online program designed for experienced supervisors who are looking to deepen their practice and leadership capability. The program blends self-paced learning with interactive workshops, facilitator-led masterclasses, and coaching circles, allowing participants to engage with complex supervision concepts while learning from peers and experts.

**Claim
20 hrs
CPD**

Facilitating Group Supervision

Workshop focuses on developing the skills required to confidently facilitate group supervision sessions. This two half-day live online virtual program supports participants to better understand group processes and dynamics while developing techniques to create inclusive and psychologically safe environments.

**Claim
8 hrs
CPD**

Supervision Practice Package

A comprehensive professional development on demand learning resource designed to strengthen and enrich supervisory practice. This curated package brings together five high-quality recordings and courses developed by the AASW, providing supervisors with practical tools, contemporary insights, and evidence-informed approaches that can be applied across a range of practice settings.

**Claim
7.25 hrs
CPD**

Want to know more?

Want to upskill your team?



SOCIAL WORK

CONGRESS

80 Years of Leadership

Shaping Tomorrow Together

Keynote speakers



Ashleigh Dickson
CEO at Hello Initiative



Karni Liddell
Paralympian, Social Worker,
Journalist & Podcaster, Disability
& DFV Justice Expert & Educator,
Media Commentator

More keynote speakers will be announced soon. Don't miss this opportunity to hear from other inspiring speakers like Ashleigh and Karni, learn from social work leaders and innovators, and connect with like-minded professionals.

Early bird registrations for the 2026 Social Work Congress close 31 July.

Register now

Gold Coast Convention & Exhibition Centre
18 – 20 November 2026

www.socialworkcongress.com.au